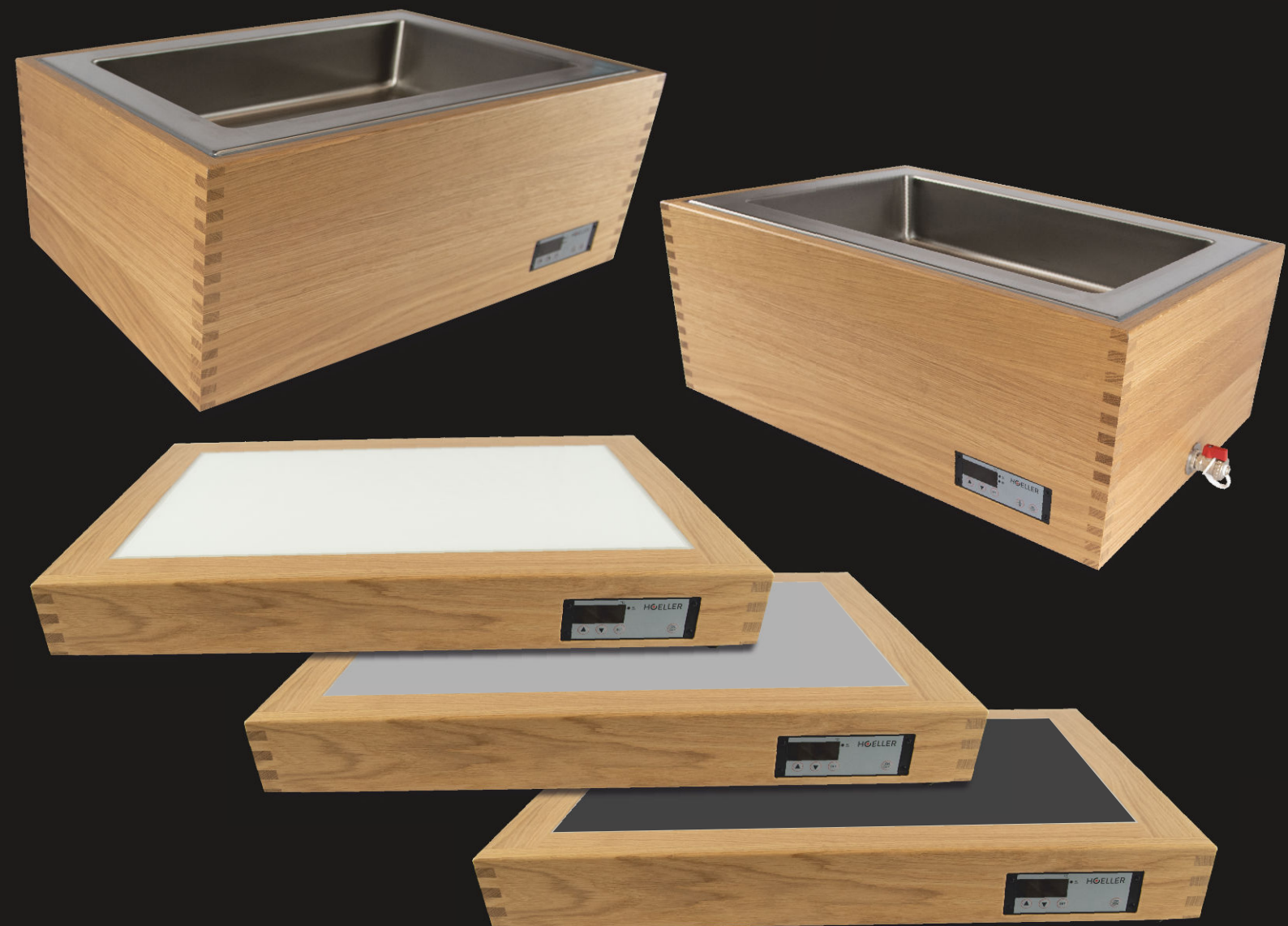




COLD & HOT
AT YOUR FINGERTIP!



consultation - planning - implementation - service

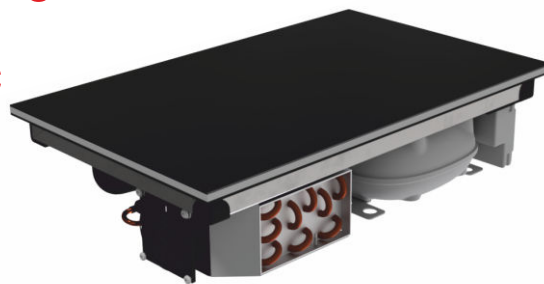


COLD-HOT PLATE



All models are available in 3 versions:

1. Cold-Hot Plate, temperature from **-5°** to **+140° C**
2. Cold Plate, temperature from **-5°** to **+15° C**
3. Hot Plate, temperature from **+20°** to **+140° C**



IN COUNTER MODELS

- plug-in ready
- remote cooling system

Function

Cold-Hot Plate for keeping dishes cold or warm at temperatures ranging from -5° to +140° C (at an ambient temperature of +24° C)

Sizes

GN1/1 330 x 530 mm GN2/1 660 x 530 mm
GN3/1 990 x 530 mm GN4/1 1320 x 530 mm
round Ø 480 mm, special dimensions on request

Surfaces

- Gorilla glass 2 mm (not for special dimensions)
9010 white or 9004 black
- ESG glass 4-6 mm RAL colours
- Stainless steel 1 mm
- Dekton 12 mm (artificial stone)
all Dekton decors available

Variants

- plug-in ready
- connected to a remote cooling system

Power Requirements

230 V – 50/60 Hz

Cold-Hot Plate and Hot Plate

GN1/1 850 W GN2/1 1520 W
GN3/1 2340 W GN4/1 3040 W
round, approx. 100 W

Cold Plate

GN1/1 100 W GN2/1 100 W
GN3/1 100 W GN4/1 350 W
round, approx. 100 W

Refrigerant

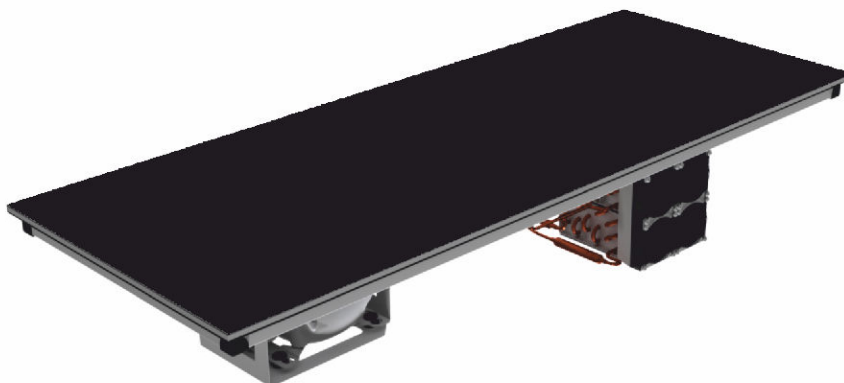
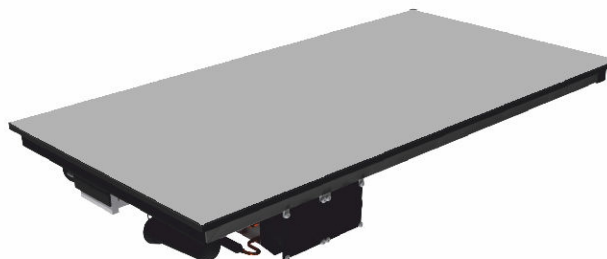
plug-in R600a, GN4/1 R290
remote cooling system R134a / R404a / R507a

Scope of Delivery

Controller incl. 1.2 m cable
Supply line 1.6 m with Schuko plug

Important Information

Regarding installation, maintenance and care can be found in the user manual (e.g. supply and exhaust air)



Version C



COLD-HOT PLATE



All models are available in 3 versions:

1. Cold-Hot Plate, temperature from **-5°** to **+140° C**
2. Cold Plate, temperature from **-5°** to **+15° C**
3. Hot Plate, temperature from **+20°** to **+140° C**

ON COUNTER MODELS

Function

Cold-Hot Plate for keeping dishes cold or warm at temperatures ranging from -5° to +140° C (at an ambient temperature of +24° C)

New Design 2021

- Stable stainless steel body with rounded feather edges
- Uniform design for Cold and Hot Plates
- Improved design thanks to supply and exhaust air from below
- Supply line from below, therefore the supply line can be routed to each side of the device

Sizes (Metal Body)

Hot Plate - Height = 81 mm

GN1/1 345 x 545 mm GN2/1 675 x 545 mm

GN3/1 1005 x 545 mm

Special dimensions on request

Cold-Hot Plate and Cold Plate -
Height = 170 mm

GN1/1 345 x 545 mm GN2/1 675 x 545 mm

Surfaces

- Gorilla glass 2 mm (not for special dimensions) 9010 white or 9004 black
- ESG glass 4-6 mm RAL colours
- Stainless steel 1 mm

Models

Grounded stainless steel body or powder coated in RAL9005 black or RAL9010 white

Power Requirements

230 V – 50/60 Hz

Cold-Hot Plate and Hot Plate

GN1/1 850 W GN2/1 1520 W

GN3/1 2340 W

Cold Plate

GN1/1 100 W GN2/1 100 W

Refrigerant

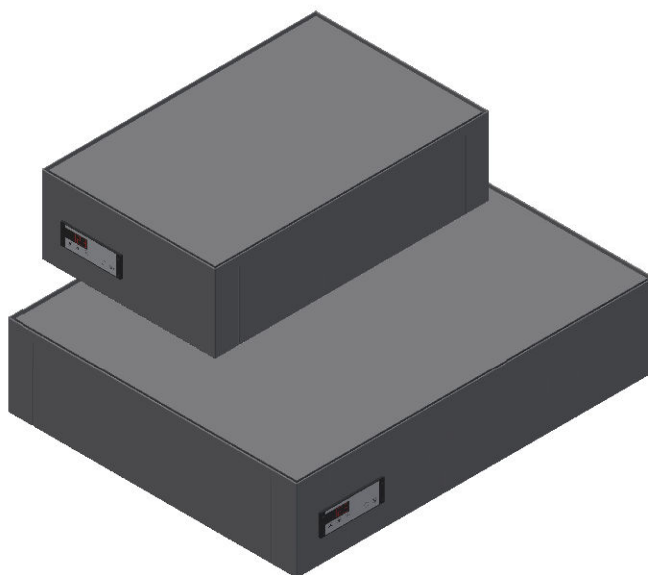
R600a

Scope of Delivery

Supply line 2 m
with Schuko plug and rubber plug

Important Information

Regarding installation, maintenance and care can be found in the user manual



Version C



WOODLINE PLATE



All models are available in 3 versions:

1. Cold-Hot Plate, temperature from **-5°** to **+140° C**
2. Cold Plate, temperature from **-5°** to **+15° C**
3. Hot Plate, temperature from **+20°** to **+140° C**

ON COUNTER MODELS

Function

Cold-Hot Plate for keeping dishes cold or warm at temperatures ranging from -5° to +140° C (at an ambient temperature of +24° C)

New Design 2021

- Uniform design and external dimensions
- Corner connection of the wooden body with finger prongs
- Improved design thanks to supply and exhaust air from below
- Supply line from below, therefore the supply line can be routed to each side of the device

Sizes

Cold-Hot Plate and Cold Plate

Height = 170 mm GN1/1 440 x 645 mm

Hot Plate

Height = 90 mm GN1/1 440 x 645 mm

Surfaces

- Gorilla glass 2 mm (not for special dimensions) 9010 white or 9004 black
- ESG glass 4-6 mm RAL colours
- Stainless steel 1 mm

Models

Standard is solid oak – natural lacquered
other wood types on request

Power Requirements

230 V – 50/60 Hz

Cold-Hot Plate and Hot Plate

850 W

Cold Plate

100 W

Refrigerant

R600a

Scope of Delivery

Supply line 2 m
with Schuko plug and rubber plug

Important Information

Regarding installation, maintenance and care
can be found in the user manual



Version C



COLD-HOT WELL



All models are available in 3 versions:

1. Cold-Hot Well, temperature from **-5°** to **+140° C**
2. Cold Well temperature from **-5°** to **+15° C**
3. Hot Well temperature from **+20°** to **+140° C**

IN COUNTER MODELS

- plug-in ready
- remote cooling system

Function

Cold-Hot Well for keeping dishes cold or warm at temperatures ranging from -5° to +140° C (at an ambient temperature of +24° C)

Sizes

GN1/1 425 x 630 mm	GN2/1 770 x 630 mm
GN3/1 1110 x 630 mm	GN4/1 1450 x 630 mm

Well

- made of 1.5 mm stainless steel in hygiene 2 finish
- dry, warp-free, heatable
- Standard depth 105 mm
- Special depths on request in hygiene 1 finish

Variants

plug-in ready
connected to a remote cooling system

Power Requirements

230 V – 50/60 Hz

Cold-Hot Well and Hot Well

GN1/1 900 W	GN2/1 1500 W
GN3/1 2700 W	GN4/1 3000 W

Cold Well

GN1/1 100 W	GN2/1 100 W
GN3/1 100 W	GN4/1 100 W

Refrigerant

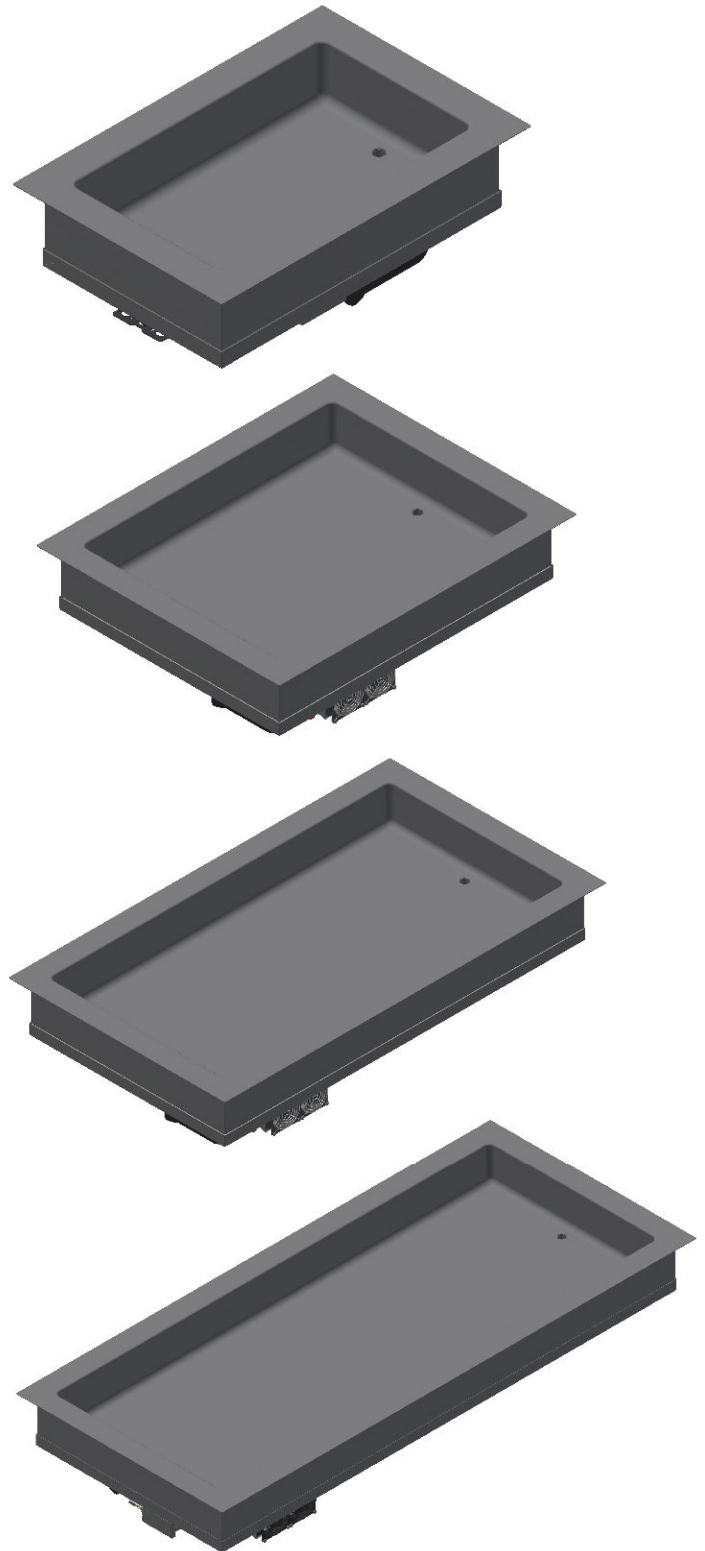
plug-in R600a
remote cooling system R134a / R404a / R507a

Scope of Delivery

Controller incl. 1.2 m cable
Supply line 1.6 m with Schuko plug

Important Information

Regarding installation, maintenance and care can be found in the user manual (e.g. supply and exhaust air)



Version C



MULTI WELL



All models are available in 3 versions:

1. Cold-Hot Well, temperature from **-5°** to **+140° C**
2. Cold Well temperature from **-5°** to **+15° C**
3. Hot Well temperature from **+20°** to **+140° C**

IN COUNTER MODELS

- plug-in ready
- remote cooling system

Function

Cold-Hot Wells for keeping dishes cold or warm at temperatures ranging from -5° to +140° C (at an ambient temperature of +24° C)

The temperature of the single wells can be adjusted separately via the controllers

Sizes

2x GN1/1 790 x 630 mm
3x GN1/1 1155 x 630 mm

Well

- made of 1.5 mm stainless steel in hygiene 2 finish
- dry, warp-free, heatable
- Standard depth 105 mm

Variants

plug-in ready
connected to a remote cooling system

Power Requirements

230 V – 50/60 Hz

Cold-Hot Well and Hot Well

2x GN1/1 1800 W
3x GN1/1 2700 W

Cold Well

2x GN1/1 100 W
3x GN1/1 100 W

Refrigerant

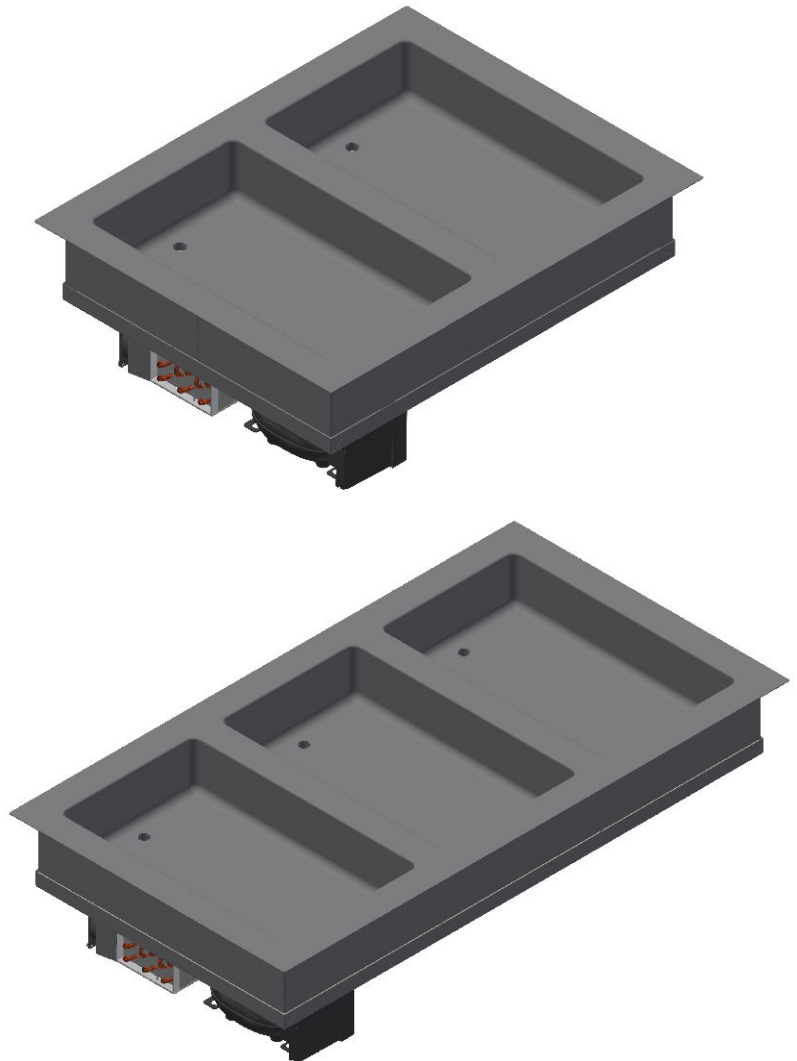
plug-in R600a
remote cooling system R134a / R404a / R507a

Scope of Delivery

2 or 3 pieces of controllers incl. 1.2 m cable
Supply line 1.6 m with Schuko plug

Important Information

Regarding installation, maintenance and care can be found in the user manual (e.g. supply and exhaust air)



Version C



COLD-HOT WELL



All models are available in 3 versions:

1. Cold-Hot Well, temperature from **-5°** to **+140° C**
2. Cold Well temperature from **-5°** to **+15° C**
3. Hot Well temperature from **+20°** to **+140° C**

ON COUNTER MODELS

Function

Cold-Hot Well for keeping dishes cold or warm at temperatures ranging from -5° to +140° C (at an ambient temperature of +24° C)

New Design 2021

- Stable stainless steel body with rounded feather edges
- Uniform design for all on counter wells
- Improved design thanks to supply and exhaust air from below
- Supply line from below, therefore the supply line can be routed to each side of the device

Sizes (Metal Body)

Height = 275 mm
GN1/1 410 x 615 mm

Well

- made of 1.5 mm stainless steel in hygiene 2 finish
- dry, warp-free, heatable
- Standard depth 105 mm

Models

Grounded stainless steel body or powder coated in RAL9005 black or RAL9010 white

Well surface is brushed in stainless steel

Power Requirements

230 V – 50/60 Hz

Cold-Hot Well and Hot Well

GN1/1 900 W

Cold Well

GN1/1 100 W

Refrigerant

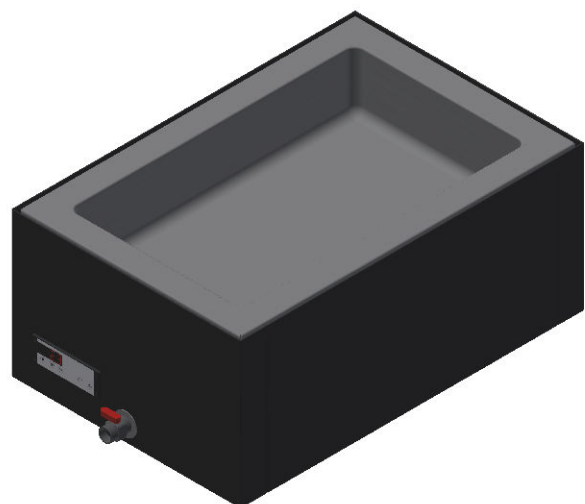
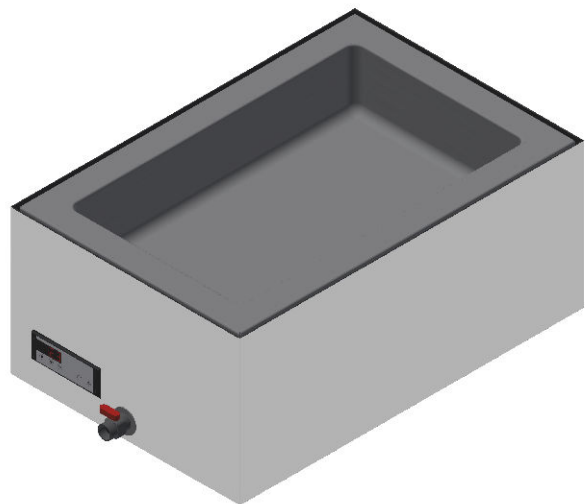
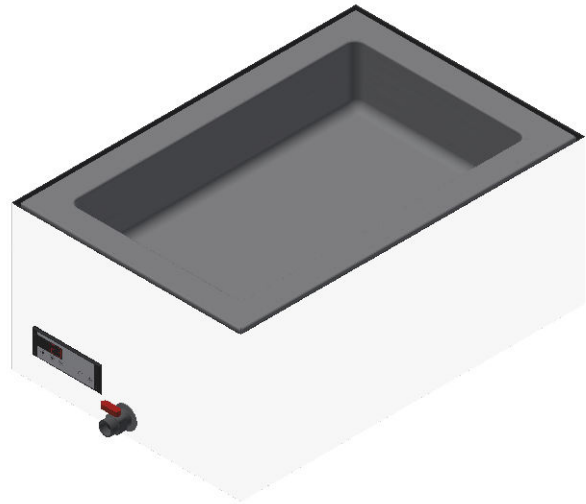
R600a

Scope of Delivery

Supply line 2 m
with Schuko plug and rubber plug

Important Information

Regarding installation, maintenance and care can be found in the user manual



Version C



WOODLINE WELL



All models are available in 3 versions:

1. Cold-Hot Well, temperature from **-5°** to **+140° C**
2. Cold Well temperature from **-5°** to **+15° C**
3. Hot Well temperature from **+20°** to **+140° C**

ON COUNTER MODELS

Function

Cold-Hot Well for keeping dishes cold or warm at temperatures ranging from -5° to +140° C (at an ambient temperature of +24° C)

New Design 2021

- Uniform design for all on counter wells
- Corner connection of the wooden body with finger prongs
- Improved design thanks to supply and exhaust air from below
- Supply line from below, therefore the supply line can be routed to each side of the device

Sizes

Height = 275 mm GN1/1 440 x 645 mm

Well

- made of 1.5 mm stainless steel in hygiene 2 finish
- dry, warp-free, heatable
- Standard depth 105 mm

Models

Standard is solid oak – natural lacquered, other wood types on request

Power Requirements

230 V – 50/60 Hz

Cold-Hot Plate and Hot Plate

GN1/1 900W

Cold Plate

GN1/1 100W

Refrigerant

R600a

Scope of Delivery

Supply line 2 m
with Schuko plug and rubber plug

Important Information

Regarding installation, maintenance and care can be found in the user manual



Version C



GORILLA GLASS

HIGH BREAK & SCRATCH RESISTANCE

Product description

Thin, chemically toughened glass,
immersed in a salt bath at 400° C

Advantages

- High surface quality
- High break and scratch resistance
- Less weight than conventional glass



HEATING LAMP

Thermal Output of **500 watts**



LED IS THE FUTURE

DURABLE - COST EFFECTIVE - ECOLOGICAL

Function

Heating Lamp for keeping dishes warm
Thermal output of 0 to 500 Watts
LED lighting and heating in one device

Sizes

125 x 300 mm
Height = 70 mm

Product Description

Infrared quartz heater 500 Watts
LED lighting 12 Volts
Heating Lamp and LED can be switched on or off separately

Power Requirements

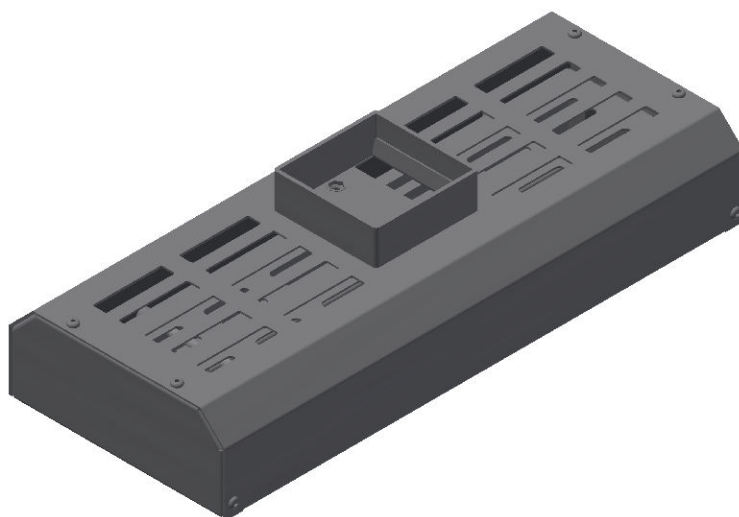
230 V – 50/60 Hz
500 Watts

Scope of Delivery

Supply cables approx. 2 m for clamp connection
LED power supply unit

Important Information

Regarding installation, maintenance and care can
be found in the user manual



HEATING AND LIGHT BRIDGE

Thermal Output **500 Watts** per Heating Lamp

LED IS THE FUTURE

DURABLE - COST EFFECTIVE - ECOLOGICAL

Function

Heating or Light Bridge for keeping dishes warm respectively to perfectly present dishes
Thermal output per Heating Lamp 500 Watts

New Design 2021

Form A = rectangular shaped columns
Form B = Double round tube columns,
Heating Lamp can be arranged either lengthwise or crosswise - Endless variants (with only one central column)

Sizes

Height (without sneeze guard) = 472 mm
Height (with sneeze guard) = 484 mm
External dimensions = axial dimensions + 40 mm
AM = axial dimensions = Distance between centre of column to centre of column
GN1/1 – AM = 700 mm
GN2/1 – AM = 870 mm
GN3/1 – AM = 1230 mm
GN4/1 – AM = 1520 mm
Custom Sizes on request

Product description

Heating or Light Bridge
Infrared quartz heater, 500 Watts each
LED lighting 12 Volts
Heating Lamps individually switchable
LED separately switchable
Electric Switchbox to be mounted inside the cabinet / underneath

Body Finishes

- polished stainless steel
- powder-coated in RAL colour

Power Requirements

230 V – 50/60 Hz

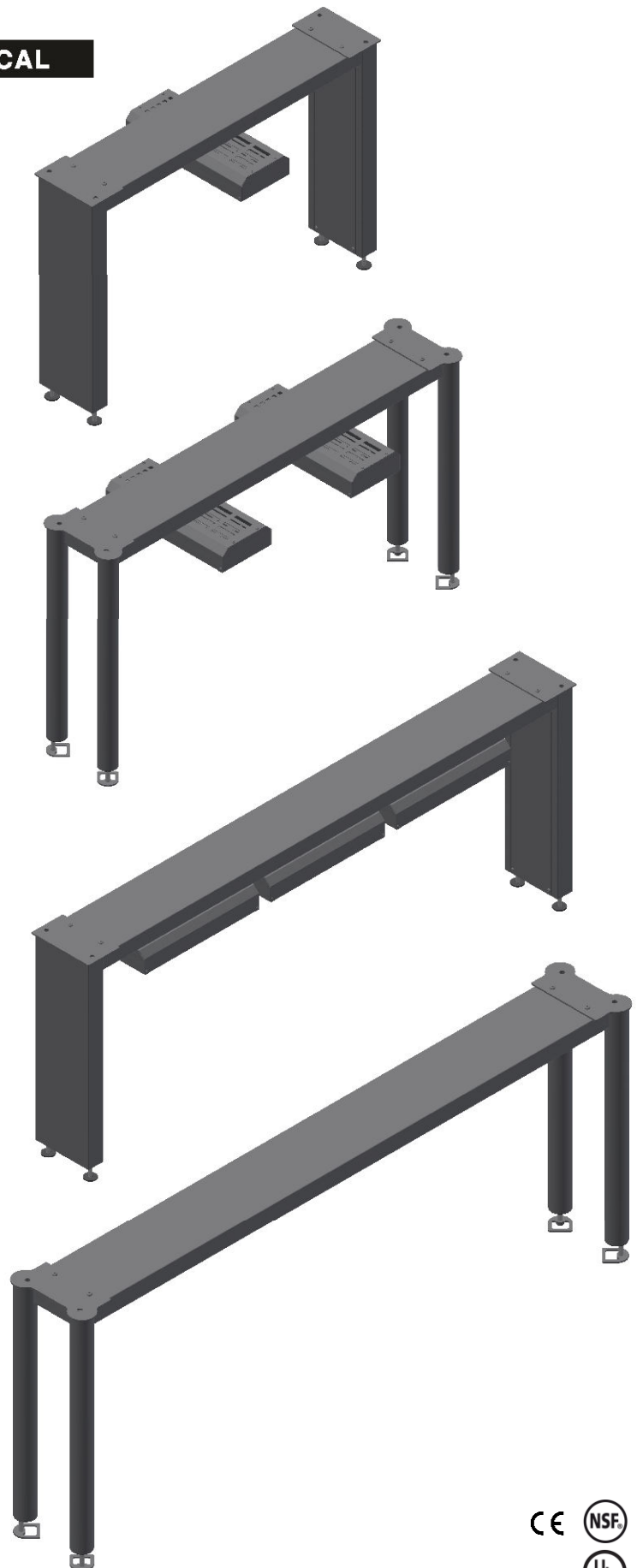
GN1/1 500 W GN2/1 1000 W
GN3/1 1500 W GN4/1 2000 W

Scope of Delivery

Supply line 1.6 m with Schuko plug

Important Information

Regarding installation, maintenance and care can be found in the user manual



SNEEZE GUARD

For Heating or Light Bridges



Product description

Sneeze Guards in different variants for the Heating or Light Bridges

New Design 2021

Form L straight = with oblique glass on one side

Form L curved = with curved glass on one side

Form U straight = with oblique glass on both sides

Form U curved = with curved glass on both sides

Form I = only straight glass on the top

Sneeze Guard straight = 8 mm ESG made of straight glass

Sneeze Guard curved = 6 mm ESG made of curved glass

Sizes

Form L: Depth = 570 mm

Form U: Depth = 690 mm

Form I: Depth = 450 mm

GN1/1 – Width = 780 mm

GN2/1 – Width = 950 mm

GN3/1 – Width = 1310 mm

GN4/1 – Width = 1600 mm

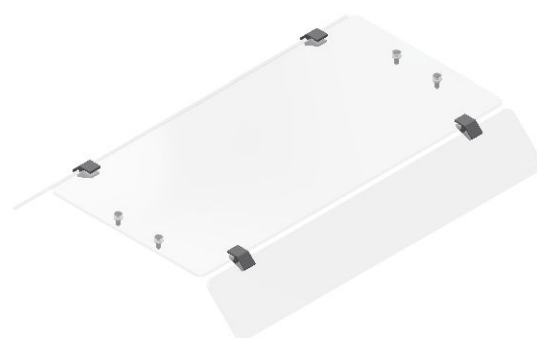
Special Dimensions on request

Scope of Delivery

incl. adhesive material

Important Information

Regarding installation, maintenance and care can be found in the user manual



WINE BARREL

The irresistible charm of a wine barrel bar adds a unique flair to your next event or buffet presentation. Be it a wine cellar that longs for a touch of comfort, a standing table event or an extraordinary food display presentation. But what really makes this wine barrel standing table so special is the built-in bucket holder, which can regulate temperatures between -5° to +140° Celsius. This wine barrel is an eye-catcher and a functional element at the same time.

HANDCRAFTED

Available in two Versions

Cold-Warm bucket holder with a temperature regulation from -5° to +140° C

Cold bucket holder with temperature regulation from -5° to +15° C

The barrel is delivered ready to plug-in.
With an adjustable temperature control display and supply line.

Power Requirements

230 V - 50/60 Hz

Cold-Warm bucket holder: 700 W

Cold bucket holder: 100 W

Refrigerant

R600a

Construction

Bucket holder
made of 1.5 mm stainless steel
Diameter: 450 mm
Depth: 400 mm

Table Top
Material: Beech wood with a wild edge
Diameter: 1100 mm

Barrel foot rail
The barrel foot is available in two options:
Made of flat steel or shaped tube



QUARTZ COMPACT HEATING BRIDGE

Heat Output **575 to 1050 watts**

INNOVATION

HANDCRAFTED

Function

Quartz-Compact-Heating Bridge for keeping dishes warm. Temperature continuously adjustable

Sizes

Height = 60 mm
Depth = 150 mm

Device width with light

750 mm	575 W + 50 W
820 mm	575 W + 50 W
1225 mm	750 W + 50 W
1430 mm	1000 W + 50 W

Device widths without light

570 mm	575 W
640 mm	575 W
945 mm	750 W
1250 mm	1000 W

Product Description

Four different lengths, with or without lighting, adjustable fastenings with quartz-heating element
Installation approx. 30 to 40 cm above the food

Power Requirements

230 V – 50/60 Hz

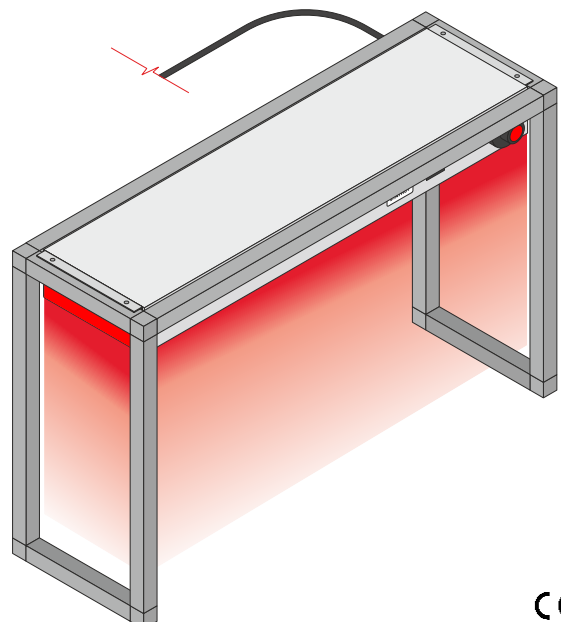
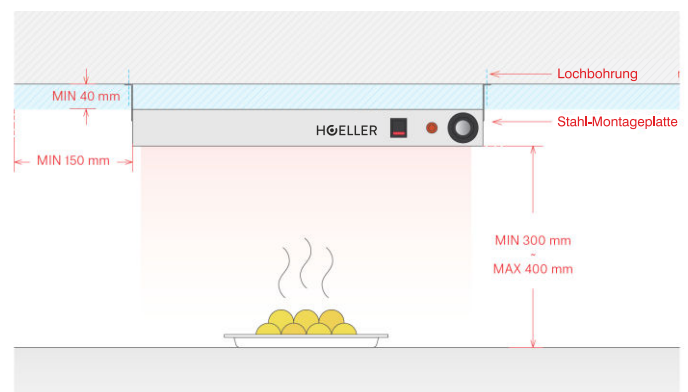
Power consumption see size overview

Accessories

Table rack
Chain for hanging

Important Information

Regarding installation, maintenance and care can be found in the user manual



DEKTON

Dekton has all the technical specifications that are necessary for a highly resistant surface to design any residential project, both indoors and outdoors.

INNOVATION IN APPLIED DESIGN

Applications

- Kitchen Work Surfaces
- Sinks
- Outdoor Work Surfaces
- Floor Coverings for Outdoor Terraces
- Exterior Walls and Facades
- Washroom Walls
- Interior Floors
- Floor Coverings for Washrooms and Pools
- Floor Coverings for Outdoor Terraces
- Staircases

Advantages

- Durable Colour
- Minimal Water Absorption
- Fire Resistant Material
- Scratch Resistant
- Abrasion Resistant
- Stain Resistant
- Superior Mechanical Strength
- Dimensional Stability
- High Resistance to UV Rays
- Maximum Fire and Heat Resistance
- Frost and Dew Resistant
- Easy Cleaning and Minimal Maintenance

Textures

Dekton is available in different textures, so the only limit is the imagination of the architect or designer, whether ultra-shiny, matte, or velvety texture options.



* Polished

✦ X-Gloss

» Ultra Textur

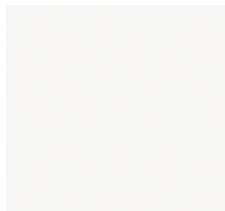
□ Ultra Matt

⊗ Velvet Texture

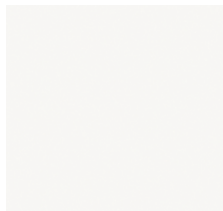
⌘ Dekton Grip+



Uyuni □



Zenith □ ④



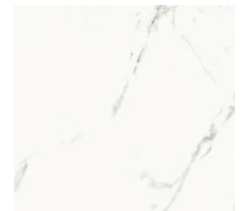
Halo * ④



Aura □ ④ ④ ④



Natura * ④



Kairos □



Opera ④ ④



Entzo □



Rem □ ④ ④



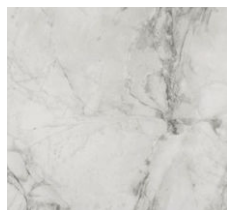
Olimpo *



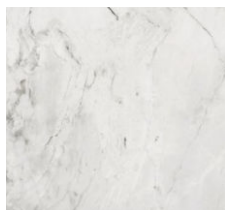
Helena * ④



Niliun □ ④ ④



Portum ④



Bergen * ④



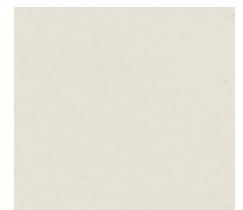
Liquid Sky □ ④



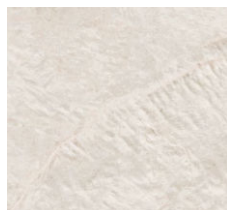
Tundra *



Lunar □ ④ ④ ④



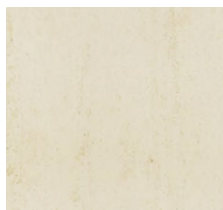
Aeris □ ④ ④ ④



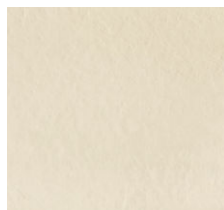
Liquid Shell ④ ④



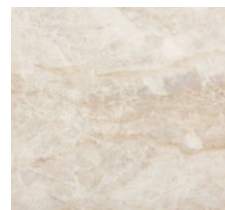
Sasea □ ④ ④ ④



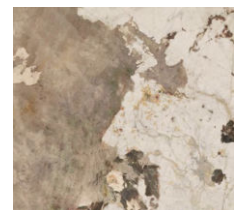
Danae □ ④ ④



Edora □ ④ ④



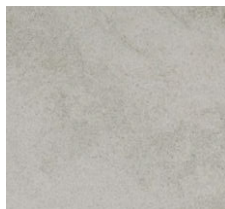
Arga ④ ④ ④



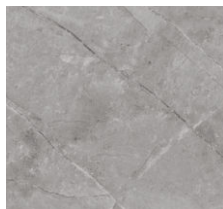
Khalo *



Keon □ ④ ④



Kovik □ ④



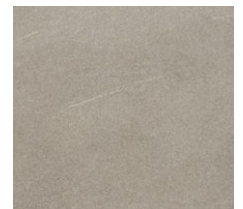
Vera □ ④ ④



Kreta □ ④ ④ ④



Soke □ ④ ④



Sirocco □ ④ ④ ④



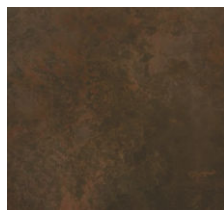
Strato □ ④ ④



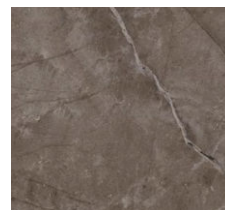
Galema □



Trilium □ ④ ④ ④



Keranium □



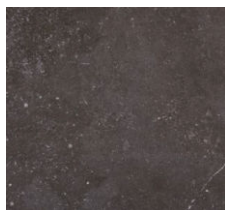
Kira □ ④ ④



Orix □ ④ ④



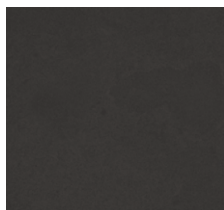
Laos □ ④ ④ ④



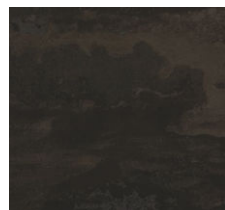
Fossil □



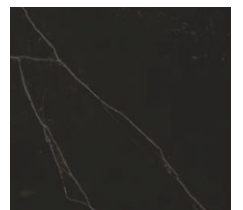
Bromo □ ④ ④



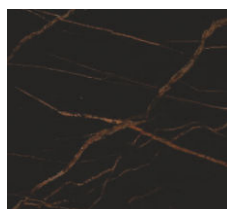
Eter □ ④ ④ ④



Radium □



Kelya □ ④



Laurent □ ④ ④



Liquid Embers □ ④



Sirius □ ④ ④



Domoos □

SILESTONE

Silestone is a hybrid surface made of minerals and recycled materials to add colour and texture to interiors.

THE ULTIMATIVE MINERAL HYBRIQ-SURFACE

Applications

Silestone is characterized by extreme Durability in the Kitchen, Washrooms, and other interiors that are Subject to constant Activity and Use.

Advantages

- Stain Resistant
- Acid and Scratch Resistant
- Resistant to strong Impacts
- Wide Range of Colours

Silestone has numerous advantages; it requires little care, has a high resistance to stains and scratches, and a very low absorption index.

Together with its minimal joints, this makes Silestone the ideal solution for work surfaces. Silestone is resistant and provides the surface a long service life.

Silestone is manufactured in over 80 colors, three textures, and numerous formats, making it extremely versatile. The colour palette ranges from muted tones, which can easily be combined with natural stone, to bold colours that do not occur in nature.

Textures

In order to always fit stylistically, Silestone offers different textures for the respective applications. Polish, Suede, or Volcano are just three of the numerous possibilities that stimulate your imagination, so that work surfaces, floor coverings, or wall coverings have exactly the desired texture.



Ⓜ Standard size (up to approx. 306cm x 140cm)

Ⓜ Jumbo size (up to approx. 325cm x 159cm)

✱ Polished

● Suede

✿ Volcano

Ⓜ Colours with N-BOOST technology

Q Technology applied to Silestone, which presupposes a maximum silicon dioxide content of 50%.

Q+ The technology applied to Silestone presupposes a crystalline silicone dioxide content of at most 50% and at least 20% of recycled material.



Ariel 🌀 ⚙️ 🌟 🌟 Q



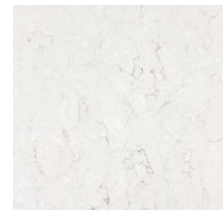
Blanco Maple 14 🌀 🌀 ⚙️ 🌟 🌟 Q



Blanco Norte 14 🌀 🌀 ⚙️ 🌟 🌟 Q



Blanco Stellar 13 🌀 🌀 ⚙️ 🌟 🌟 Q+



Snowy Ibiza 🌀 🌟 🌟 Q



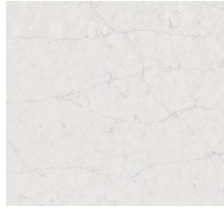
White Arabesque 🌀 🌟 🌟 Q



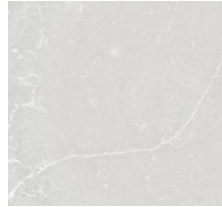
White Storm 14 🌀 🌀 ⚙️ 🌟 🌟 Q



Yukon 🌀 🌟 🌟 Q



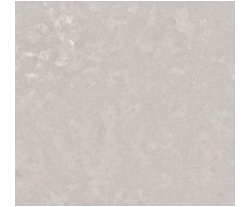
Pearl Jasmine 🌀 🌟 🌟 Q



Desert Silver 🌀 🌟 🌟 Q



Lagoon 🌀 🌀 ⚙️ 🌟 🌟 Q



Poblenou 🌀 🌟 Q+



Et. Serena 🌀 🌟 🌟 Q



Camden 🌀 🌟 Q+



Coral Clay Colour 🌀 🌟 🌟 Q



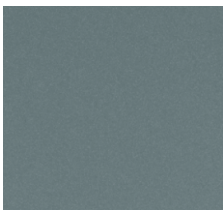
Rougui 🌀 🌟 🌟 Q



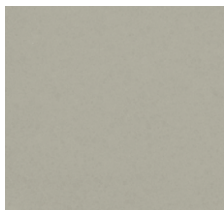
Arcilla Red 🌀 🌟 Q+ **NEU**



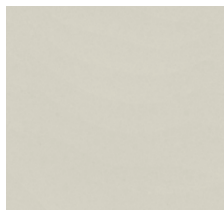
Posidonia Green 🌀 🌟 Q+ **NEU**



Cala Blue 🌀 🌟 Q+ **NEU**



Cincel Grey 🌀 🌟 Q+ **NEU**



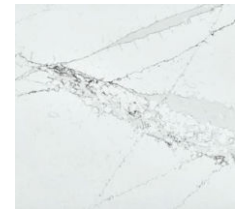
Faro White 🌀 🌟 Q+ **NEU**



Ethereal Dusk 🌀 🌟 Q+ **NEU**



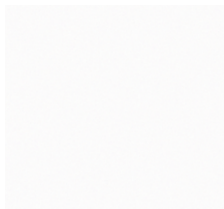
Ethereal Glow 🌀 🌟 Q+ **NEU**



Ethereal Haze 🌀 🌟 Q+ **NEU**



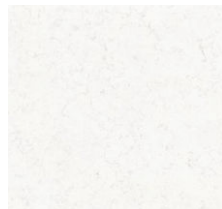
Ethereal Noctis 🌀 🌟 Q+ **NEU**



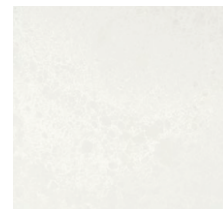
Iconic White 🌀 🌟 Q Ⓜ



Blanco Zeus 🌀 🌀 ⚙️ 🌟 🌟 Q



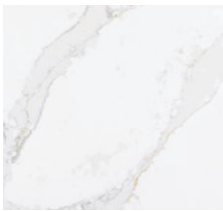
Miami Vena 🌀 🌟 Q+



Nolita 🌀 🌟 Q+



Miami White 17 🌀 🌟 Q



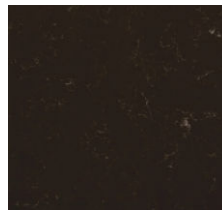
Et. Calacatta Gold 🌀 🌟 🌟 Q



Et. Statuario 🌀 🌟 Q



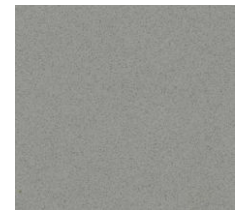
Noka 🌀 🌟 Q



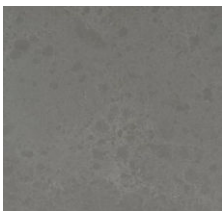
Calypso 🌀 🌟 Q



Niebla 🌀 🌟 Q



Kensho 🌀 🌟 🌟 Q



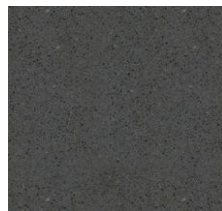
Seaport 🌀 🌟 Q+



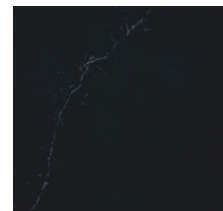
Gris Expo 🌀 🌀 ⚙️ 🌟 🌟 Q



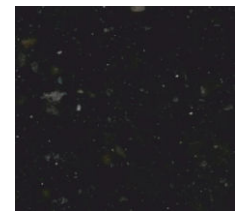
Cemento Spa 🌀 🌀 ⚙️ 🌟 🌟 Q



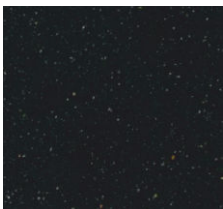
Marengo 🌀 🌟 Q



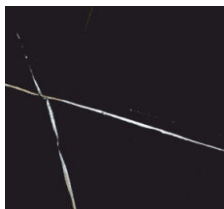
Charcoal Soapstone 🌀 🌟 Q



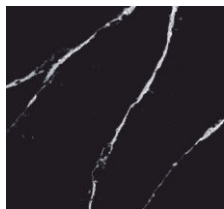
Arden Blue 🌀 🌟 🌟 Q



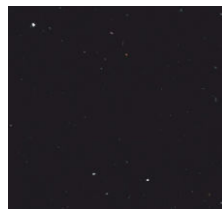
Negro Tebas 18 🌀 🌀 ⚙️ 🌟 🌟 Q



Et. Noir 🌀 🌟 Q Ⓜ



Et. Marquina 🌀 🌟 Q Ⓜ



Negro Stellar 🌀 🌀 ⚙️ 🌟 Q+



Corktown 🌀 🌟 Q+

HOELLER
MANUFACTURING

Peter-Mitterhofer-Straße 4
A-3300 Amstetten

www.hoeller-solutions.com
office@hoeller-solutions.com
T +43 7472 233 29

*Competence from the buffet to the commercial kitchen
Cold-Hot Plate/ Cold-Hot Well -5°C to +140°C, Silestone, Dekton*